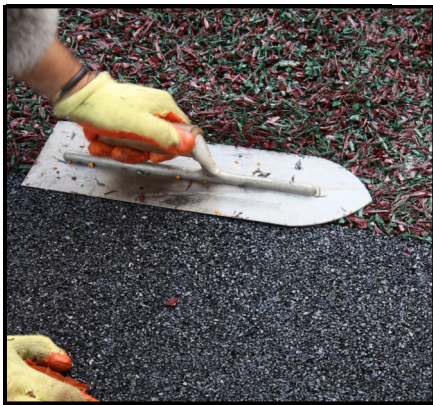
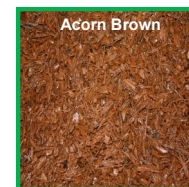
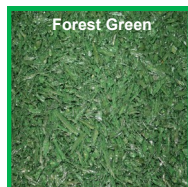


COLOUR COATED RUBBER MULCH



Colour coated mulch produced from recycled tyre rubber can be used as a loose fill material or as a tested bonded system in many applications. The black rubber is encapsulated in a tough, PU polymer coating with a non toxic synthetic pigment that gives a natural and stunning eco-appearance.

STANDARD COLOURS



As an impact absorbing surface the system has been tested and is classified in accordance with BSEN:1177(2008) for critical fall heights.

Six standard colours are available from stock supplied in 10kg bags or one tonne bulk bags depending upon the application.

- ⇒ Simple to install
- ⇒ Does not necessarily require an engineered base.
- ⇒ Low maintenance
- ⇒ Uses one of the most intractable wastes known to man.

Our coloured mulch is produced after many years of experience in developing an 'in house' process for colour coating tyre rubber.

MSDS and technical bulletins are available; please phone for expert advice on coverage, rates, critical fall heights, binder coverage, health and safety requirements and, of course, prices.

Charles Lawrence International are the 'One Stop Shop' for colour coated mulch, binder, base materials made from recycled tyre rubber, coloured EPDM and recycled black EPDM.

See our website at www.rubbergranules.com for more details.

Charles Lawrence International Ltd
Jessop Way, Newark, Nottinghamshire, NG24 2ER, ENGLAND
Tel: + 44 (0) 1636 642460 Fax: + 44 (0) 1636 642477
Email: info@rubbergranules.co.uk
Websites: www.rubbergranules.co.uk www.pitchmachinery.co.uk

